

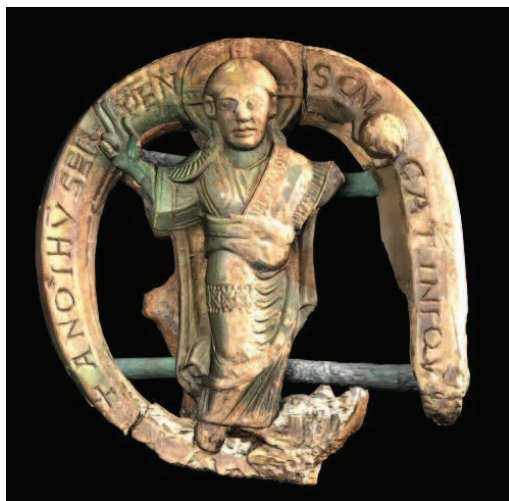


EPOCH

THE EUROPEAN NETWORK OF EXCELLENCE ON INTELLIGENT HERITAGE

EPOCH is a network of more than 80 European cultural institutions joining their efforts to improve the quality and effectiveness of the use of Information and Communication Technology for Cultural Heritage. Participants include university departments, research centres, heritage institutions, such as museums or national heritage agencies, and commercial enterprises, together endeavouring to overcome the fragmentation of current research in this field.

Fragmentation affects clusters of research centres as seen in past international projects: small partnerships such as those managing previous tightly focused European-funded research projects could achieve excellent results but they were ephemeral, did not exploit potential synergy, and could not attain the critical mass necessary to produce permanent effects in the structure of European research. Fragmentation



A virtual replica of an ivory artifact, from one of the EPOCH showcases

Fragmentation affects the “production pipeline” too, i.e. the process of producing valuable communication from scientific data. In fact research focuses on individual issues as, for instance, visualization or data management but usually cares little of what comes before or after. Fragmentation, finally, derives from a difficult dialogue between technologists and heritage professionals who still need to find a common, interdisciplinary language to communicate.

EPOCH is coordinated by the University of Brighton (UK) and is led by a core team of four institutions: the University of Brighton, the Ename Center for Public Archaeology (BE), the University of Leuven (BE) and PIN (IT). The network is managed by a Board of Directors where all the constituencies and geographic areas are represented.



Augmented reality at Sagalassos: the virtually reconstructed Nymphaeum

EPOCH is funded until 2008 but it is envisaged that the network will continue after the European support will end.

EPOCH's WORK PROGRAM

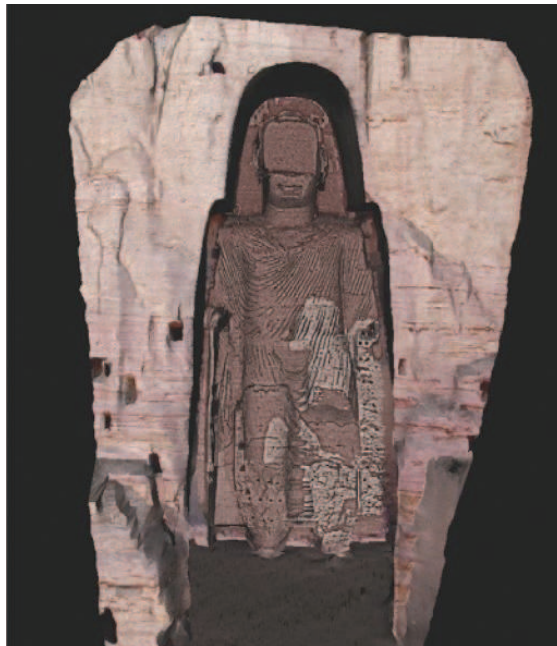
EPOCH's activity has been organized into four major workpackages, each under the supervision of one of the core partners.

MANAGEMENT (University of Brighton, Prof. David Arnold) This workpackage concerns all the activities necessary for smooth and effective functioning of the network. It includes control and monitoring, auditing, and reporting. The WP contains also policy making activities, that is the standardized procedures to prioritise its activities, managing risk and ensuring efficient use of resources. A highly important activity is assembling the Review College, a group of independent experts elected to provide advice and suggestions for compiling the research agenda and to contribute to the evaluation of the network's results.

INTEGRATING ACTIVITIES (Ename Center, Ir. Daniel Pletinckx) This workpackage focuses on undertaking activities to integrate the work of partners and to secure the correct external inputs to the work of the network. Here the work of evaluating stakeholder needs through all stages of processing digital artefacts (Vertical market) is integrated with a Horizontal Market Watch assessing the potential importance and impact of generic technologies, and the

results of liaisons with activities and projects elsewhere. This WP will also manage an Internet brokerage service for SME offering scarce or specialized skills and equipment and undertake the implementation of showcases to communicate the potential which could result from integrating the results of previous FP projects and other national projects and analyze reactions.

This will set priorities for the network's own program of jointly executed research, for implementation in WP3. It will also indicate priorities for research to be undertaken outside of the NoE under other initiatives.



The digital model of the Bamiyan Buddha destroyed by Talibans, developed within another EPOCH showcase

JOINTLY **R**ESEARCHED **E**XECUTED **R**ESearch (University of

Leuven, Prof. Luc Van Gool) The third workpackage is concerned with "doing". In the first period this workpackage will define the architecture, the components and the design guidelines for a common infrastructure for producing applications involving digital versions of tangible cultural heritage. This combines with the research agenda from WP2 to inform the definition of the next revision of JPA. The workpackage then implements the plan of action by soliciting and commissioning targeted pieces of jointly executed research; and by monitoring and evaluating the components of the program in progress. The jointly executed research is expected to involve a mixture of integration of existing components and sub-systems and new tools to fill gaps in the integrated pipeline or improve functionality at specific bottlenecks.

on research, policies and practices on intelligent applications of Information Technology to Cultural Heritage in the European Union.

For the first year, EPOCH's activity focuses on the development of showcases, demonstrating innovative solutions and technological integration for target application areas in the Cultural Heritage domain. The Network has also started its training and mobility activity, providing scholarships and supporting the organization of courses mainly located in Eastern Europe. Work is in progress also for the compilation of the reports on training and research and on the definition of priorities for the research agenda, with the contribution of the members of the Review College.

EPOCH is a Network of Excellence on Intelligent Cultural Heritage within the IST (Information Society Technologies) section of the Sixth Framework Programme of the European Commission. For more details, visit the project web site:

www.epoch-net.org

EPOCH is funded by the European Commission under the Community's Sixth Framework Programme, contract no. 507382. However, this leaflet reflects only the authors' views and the European Community is not liable for any use that may be made of the information contained herein.

SPREADING **E**XCELLENCE (PIN, Prof. Franco Niccolucci)

The final workpackage is concerned with taking the experience acquired by partners in the network and sharing it with others inside the Network community and with the wider audience of interest professionals and the public. Under this workpackage the network will run events, maintain a web-site with both public and restricted areas, nurture the embryonic industry, disseminate to a wider public and organize or encourage the growth of the skills base through education, training and staff mobility, and a bursary scheme. The workpackage is also responsible for the network's publishing activity, including an annual "Report on the State of the Union"